

## CONCERTO FOR TRUMPET

SOLO TPT.

BRASS

SOLO TPT. AD LIB.

SLOW-CHORALE

TBNS. (TPT. FILLS ON D.S.)

+ TPT.

RIT.

MED.-LATIN RAGTIME VAMPI

FINE

Cm7

Fm7

FLUTE 2ND CUE VAMPI

BVA

CLAR. 1ST CUE

16

A CUE 2

BVA

2X + BRASS

VAMP TPT. SOLO

CONT. SOLO

Cm<sup>7</sup> Fm<sup>b</sup> CUE Cm<sup>7</sup> Fm<sup>7</sup> B<sup>b7</sup> E<sup>b</sup> MAJ.<sup>7</sup> Am<sup>7</sup>

+ TBNS. + BARI 2X

D<sup>7</sup> G MAJ.<sup>7</sup> C MAJ.<sup>7</sup> F#m<sup>7</sup> B<sup>7</sup> E MAJ.<sup>7</sup> A MAJ.<sup>7</sup> E<sup>b</sup>m<sup>7</sup>

A<sup>b7</sup> D<sup>b</sup> D<sup>b</sup> VAMP END SOLO [B] SHOUT

2 [C] 16-22-ff

TPT. EXTENDED CADENZA [C] TPTS. COL WOODWIND LINES AT [A] SAX. + TBN. + BARI. LINES

BASS ARCO

TPT. SOLO PLAY 3X'S [D] 1ST X - SAX LINE [C] 2ND X - + TPTS. - SAX COUNTERLINE 3RD X - + TBNS. + BARI

+ BARI (2x) p.

END SOLO

[E] PLAY 4X'S

D. S. AL FINE

SOLO TRUMPET

# THE DON ELLIS BIG BAND SERIES

DON ELLIS

## CONCERTO FOR TRUMPET

5/4

$G_m$   $Dm^7$   
 AD LIB. AD LIB.

SLOW-CHORALE

16 RIT.

MED.-LATIN VAMPI

VAMPII

A

16

SOLO (VAMP)

$Dm^7$   $Gm^6$   $CUB$   $Dm^7$   $Gm^7$   $Cm^7$   $FMAJ.^7$   $Bm^7$

$E^7$   $AMAJ.^7$   $DMAJ.^7$   $G^{\#}_m^7$   $C^{\#}7$   $F^{\#}MAJ.^7$   $BMAJ.^7$   $Fm^7$   $B^b7$

$E^b$   $E^b$   $Dm^7$  (VAMP)  $Gm^6$

B END SOLO

16

EXTENDED CADENZA AD LIB.

C

16

D PLAY 3 X'S SOLO

$Dm^7$   $Gm^6$   $C^7$   $F$

$Bm^7$   $E^7$   $A$   $D$   $G^{\#}_m^7$   $C^{\#}7$   $F^{\#}$   $B$

$Fm^7$   $B^b7$   $E^b$   $E^b$

E

16

SLOW-CHORALE

AD LIB FILLS OVER CHORALE

END

9

RIT.

# WOODWIND 1 THE DON ELLIS BIG BAND SERIES

DON ELLIS

## CONCERTO FOR TRUMPET

FLUTE

SLOW-CHORALE

MED.-LATIN

16 RIT.

VAMPI

(FLUTE)

2X ONLY

VAMPI

A

2

BVA

B

B

B

TPT. SOLO

VAMPI

CUE

16

VAMP

To CLAR.

B

CLAR. BVA

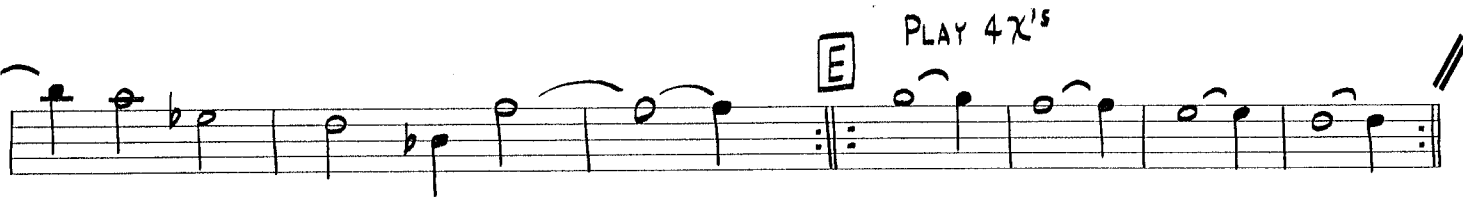
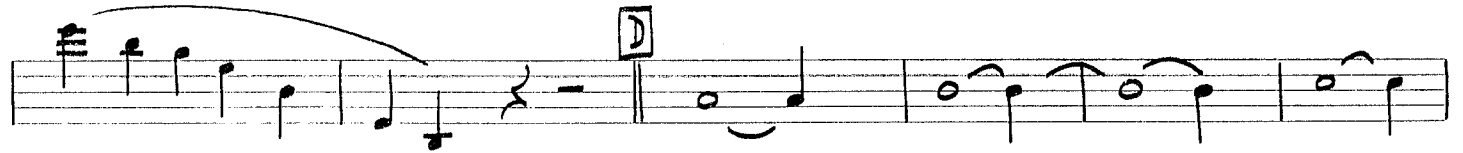
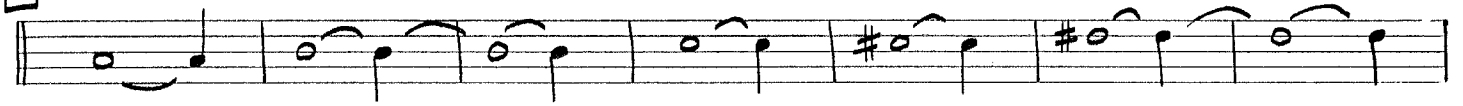
B

B

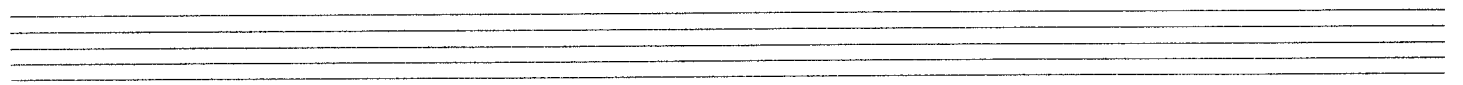
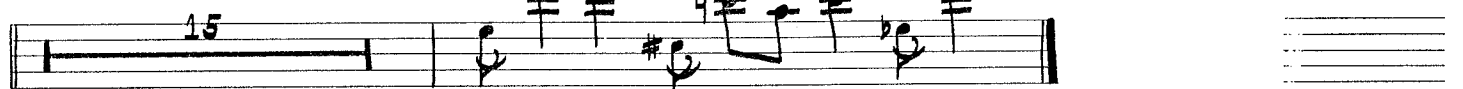
TPT. CADENZA

To ALTO

**C** ALTA



SLOW-CHORALE



WOODWIND 2 THE DON ELLIS BIG BAND SERIES DON ELLIS

CONCERTO FOR TRUMPET

FLUTE SLOW-CHORALE MED.-LATIN  
16 RIT. VAMP I

2X ONLY VAMP II

BVA \_\_\_\_\_

B \_\_\_\_\_

B \_\_\_\_\_

B \_\_\_\_\_

TPT. SOLO VAMP I CUE 16 VAMP To CLAR. B CLAR. BVA \_\_\_\_\_

B \_\_\_\_\_

B \_\_\_\_\_ TPT. CADENZA

22

**C** ALTO

Handwritten musical notation for the first system, consisting of two staves of music. The first staff contains a sequence of notes: G4, A4, B4, C5, B4, A4, G4, F#4, E4, D4. The second staff continues with notes: C4, D4, E4, F#4, G4, A4, B4, C5, B4, A4, G4, F#4, E4, D4.

Handwritten musical notation for the second system. The first staff begins with a treble clef and a key signature of one sharp (F#). It contains notes: F#4, G4, A4, B4, C5, B4, A4, G4, F#4, E4, D4. A boxed 'D' chord symbol is written above the staff. The second staff continues with notes: C4, D4, E4, F#4, G4, A4, B4, C5, B4, A4, G4, F#4, E4, D4.

Handwritten musical notation for the third system, continuing the melodic line with notes: C4, D4, E4, F#4, G4, A4, B4, C5, B4, A4, G4, F#4, E4, D4.

Handwritten musical notation for the fourth system. The first staff contains notes: C4, D4, E4, F#4, G4, A4, B4, C5, B4, A4, G4, F#4, E4, D4. A 'PLAY 2X's' instruction is written above the staff. The second staff contains a double bar line followed by a repeat sign and a whole note G4.

Handwritten musical notation for the fifth system, showing a change in rhythm and pitch with notes: C4, D4, E4, F#4, G4, A4, B4, C5, B4, A4, G4, F#4, E4, D4.

Handwritten musical notation for the sixth system, continuing the melodic line with notes: C4, D4, E4, F#4, G4, A4, B4, C5, B4, A4, G4, F#4, E4, D4.

Handwritten musical notation for the seventh system. The first staff contains notes: C4, D4, E4, F#4, G4, A4, B4, C5, B4, A4, G4, F#4, E4, D4. A boxed 'E' chord symbol is written above the staff. The second staff contains a double bar line followed by a repeat sign and a whole note G4. A 'PLAY 4X's' instruction is written above the staff.

Handwritten musical notation for the eighth system. It begins with the instruction 'SLOW - CHORALE' and a measure rest of 15. The notation continues with notes: C4, D4, E4, F#4, G4, A4, B4, C5, B4, A4, G4, F#4, E4, D4.

Two empty musical staves at the bottom of the page.

WOODWIND 3

# THE DON ELLIS BIG BAND SERIES

DON ELLIS

## CONCERTO FOR TRUMPET

CLARINET

Musical staff for Clarinet in 5/4 time. It features a series of rests followed by a measure with a fermata. Above the staff, the tempo markings "SLOW-CHORALE" and "MED.-LATIN VAMPI" are present. A measure rest is labeled "16" and "RIT.".

VAMP II

Musical staff for VAMP II. It begins with a repeat sign and contains a melodic line with various accidentals. A boxed letter "A" is placed above the staff. The staff ends with a double bar line and a fermata, with the number "2" written below.

Continuation of the VAMP II melodic line, showing a sequence of eighth and quarter notes with various accidentals.

Continuation of the VAMP II melodic line, featuring a mix of eighth and quarter notes with accidentals.

Continuation of the VAMP II melodic line, showing a sequence of eighth notes with various accidentals.

Continuation of the VAMP II melodic line, featuring a mix of eighth and quarter notes with accidentals.

Continuation of the VAMP II melodic line, showing a sequence of eighth notes with various accidentals. The staff ends with a double bar line and a fermata, with the number "16" written below. Above the staff, the text "TPT. SOLO VAMP" and "CUE" are present.

VAMP

To TENOR

**B**

SHOUT  
TENOR

Musical staff for VAMP. It begins with a repeat sign and contains a series of rests. The staff ends with a double bar line and a fermata.

TPT. CADENZA

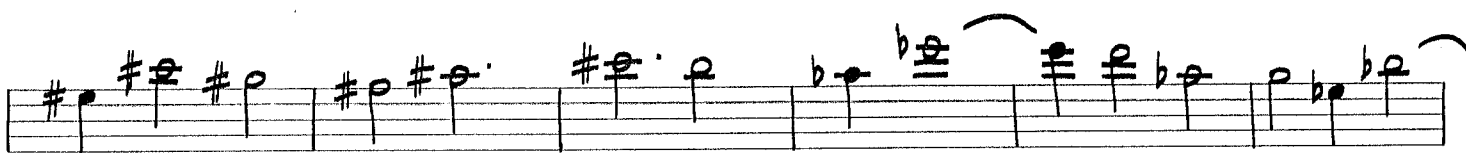
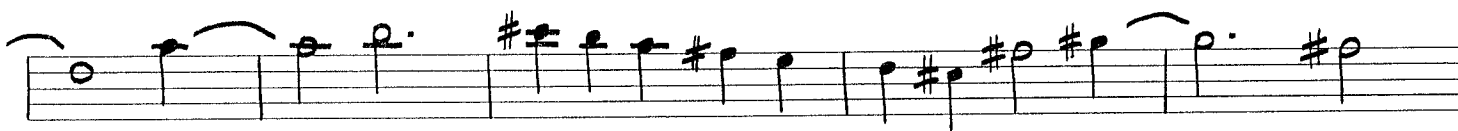
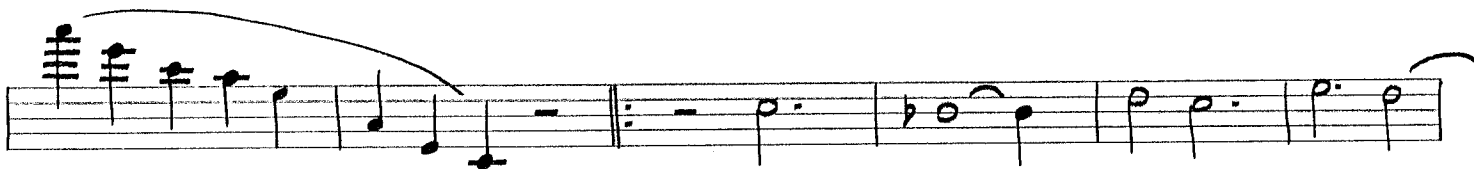
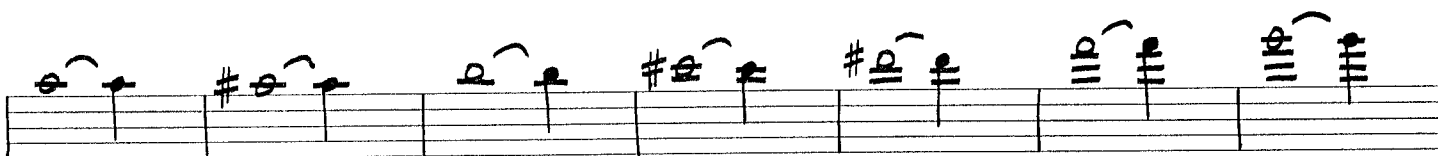
**C**

Musical staff for TPT. CADENZA. It features a melodic line with various accidentals and a boxed letter "C" above the staff.





**D**

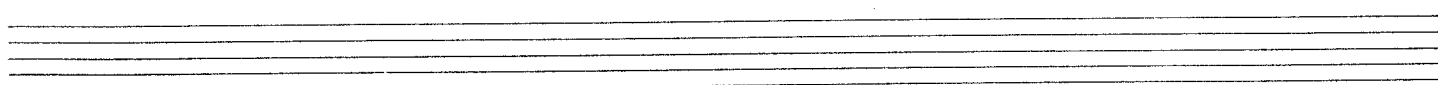


**E** PLAY 4X's



SLOW-CHORDALE To CLAR.

BVA



CONCERTA FOR TRUMPET

CLARINET

Musical notation for Clarinet part, measures 1-16. Includes tempo marking "SLOW-CHORALE" and "RIT.".

MED-LATIN  
VAMPI

VAMPII

Musical notation for Med-Latin Vampi part, measures 1-2. Includes section marker "A".

Musical notation for Med-Latin Vampi part, measures 3-4.

Musical notation for Med-Latin Vampi part, measures 5-6.

Musical notation for Med-Latin Vampi part, measures 7-8.

Musical notation for Med-Latin Vampi part, measures 9-10.

Musical notation for Med-Latin Vampi part, measures 11-16. Includes markings "TPT. SOLO VAMP", "CLUE", and "16".

VAMP

TO TENDR

**B**

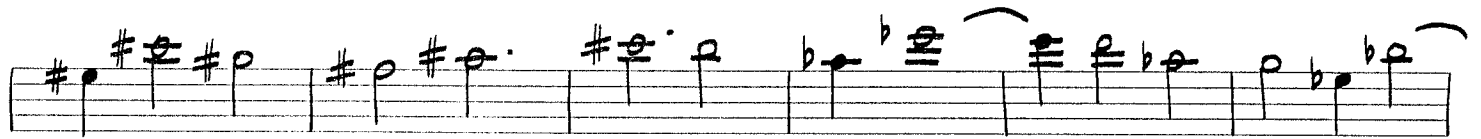
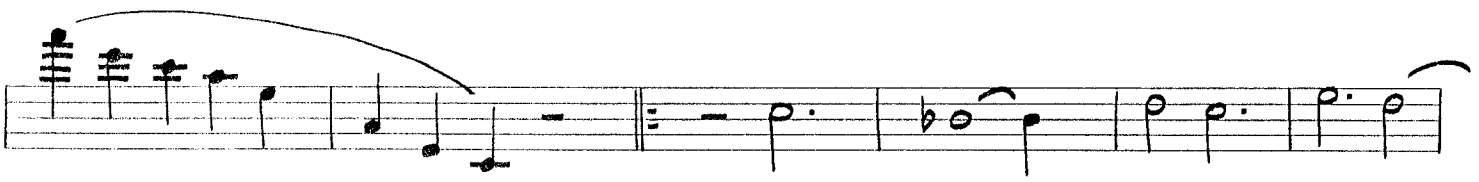
SHOUT  
TENDR

Musical notation for Vamp part, measures 1-7.

TPT. CADENZA

**C**

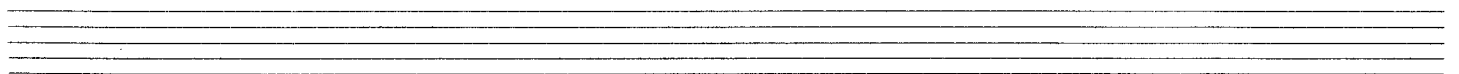
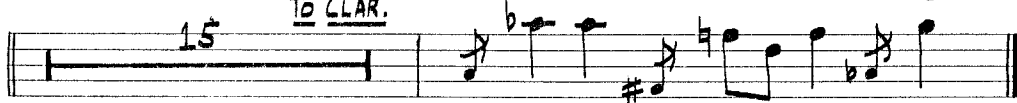
Musical notation for Trumpet Cadenza part, measures 1-4.



SLOW - CHORALE

TO CLAR.

8va



WOODWIND 5 THE DON ELLIS BIG BAND SERIES

DON ELLIS

CONCERTO FOR TRUMPET

BARI SAX

SLOW - CHORALE

First staff of music for Bari Sax, starting with a 5/4 time signature and a '4' measure rest.

Second staff of music, including a 'B' section and a 'RIT.' (ritardando) marking.

MED.-LATIN

VAMPI

VAMPI II

2 X ONLY

Third staff of music, featuring 'MED.-LATIN VAMPI' and 'VAMPI II' sections with repeat signs.

Fourth staff of music, continuing the melodic line with various accidentals.

Fifth staff of music, continuing the melodic line.

Sixth staff of music, continuing the melodic line.

TPT. SOLO VAMP

Seventh staff of music, including a 'TPT. SOLO VAMP' section with repeat signs.

CUE

Eighth staff of music, starting with a 'CUE' section and a '16' measure rest.

Ninth staff of music, continuing the melodic line.

# BARI SAX

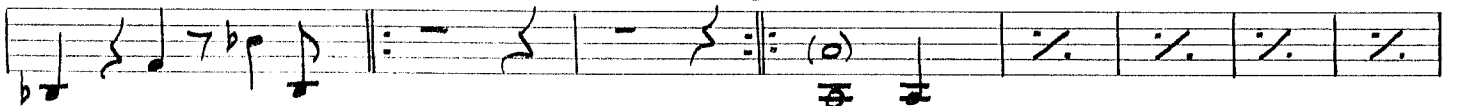
22



VAMP

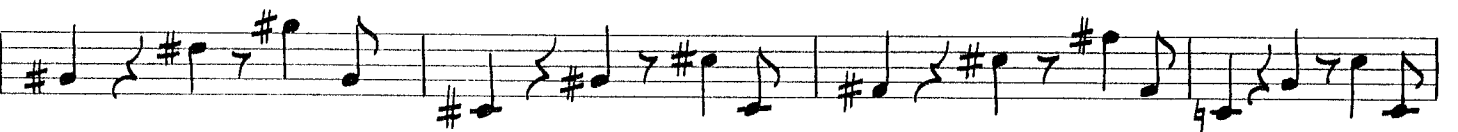
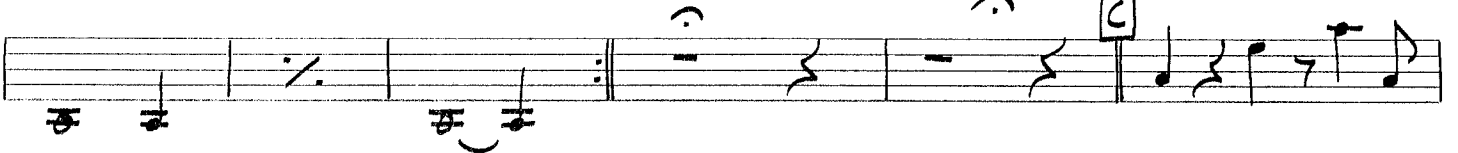
**B**

SHOUT



TPT. CADENZA

**C**



**D**



V.S.

# BARI SAX

~3~

PLAY 2ND X ONLY

Handwritten musical notation for the first section, consisting of five staves. The notation includes various note values (quarter, eighth, and sixteenth notes), rests, and accidentals (sharps and flats). The first staff begins with a slur over the first four notes. The second staff has a repeat sign at the beginning. The third staff has a sharp sign before the first note. The fourth staff has a sharp sign before the first note and a flat sign before the last note. The fifth staff has a sharp sign before the first note.

**E** PLAY 4 X'S

Handwritten musical notation for the second section, starting with a box around the letter 'E' and followed by a staff with a double bar line and repeat sign.

SLOW - CHORALE

Handwritten musical notation for the 'SLOW - CHORALE' section, consisting of a single staff with a series of half notes.

Handwritten musical notation for the 'SLOW - CHORALE' section, consisting of a single staff with a series of half notes.

RIT.

Handwritten musical notation for the 'RIT.' section, consisting of a single staff with a series of half notes and a fermata over the final note.

Two empty musical staves.

Two empty musical staves.

TRUMPET 1

# THE DON ELLIS BIG BAND SERIES

DON ELLIS

## CONCERTO FOR TRUMPET

**SLOW - CHORALE**

**MED. - LATIN VAMPI**

**HARMON (STEM IN) 2X ONLY**

**VAMP II**

**VAMP TPT. SOLO**

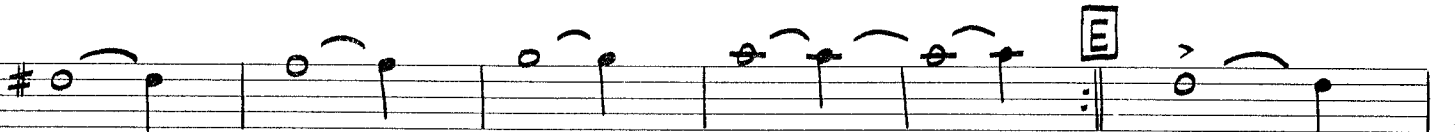
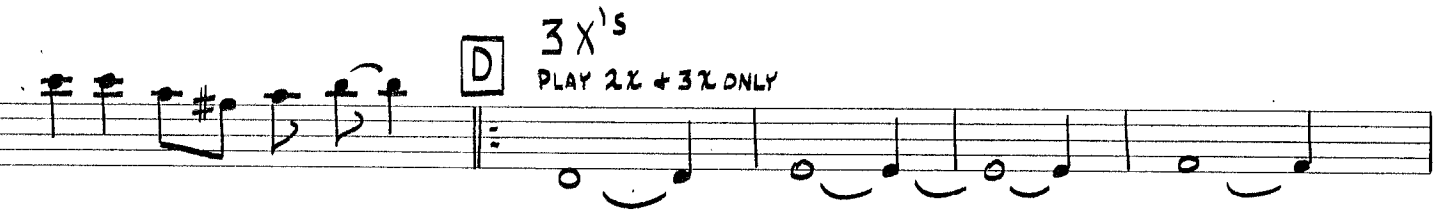
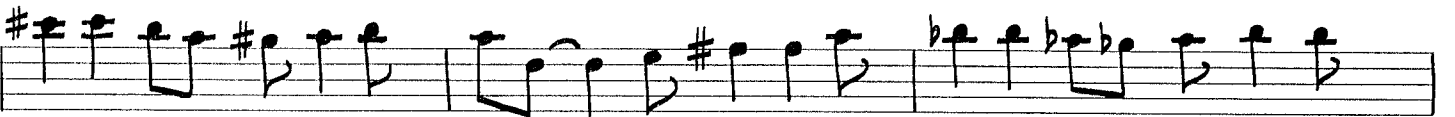
**CUE**

**SHOUT OPEN**

**FINE**

**Rit.**

**16**





TRUMPET 2

# THE DON ELLIS BIG BAND SERIES

DON ELLIS

## CONCERTO FOR TRUMPET

5/4

SLOW-CHORALE

Rit.

FINE

MED.-LATIN  
VAMP I

VAMP II

A HARMON (STEM IN)  
2X ONLY

1 2

VAMP  
TPT. SOLO

CUE

VAMP

B SHOUT  
OPEN

16



TRUMPET 3

THE DON ELLIS BIG BAND SERIES

DON ELLIS

CONCERTO FOR TRUMPET

5/4

SLOW-CHORALE

Rit.

FINE

MED.-LATIN VAMP II

VAMP II

A

ST. MUTE 2X ONLY

1

2

VAMP TPT. SOLO

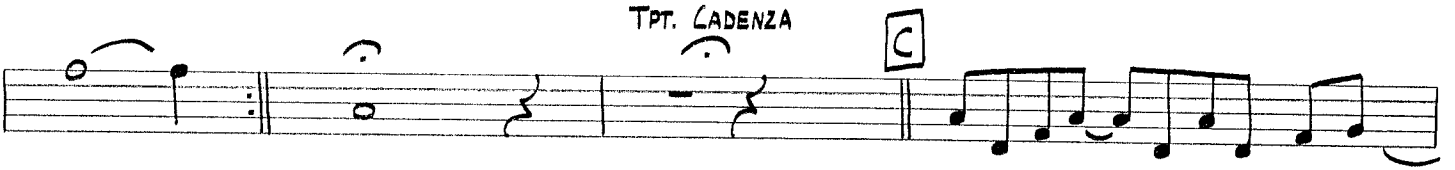
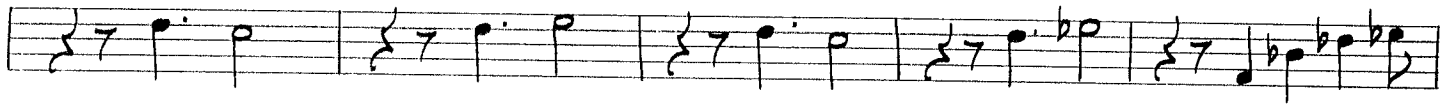
CUE

VAMP

16

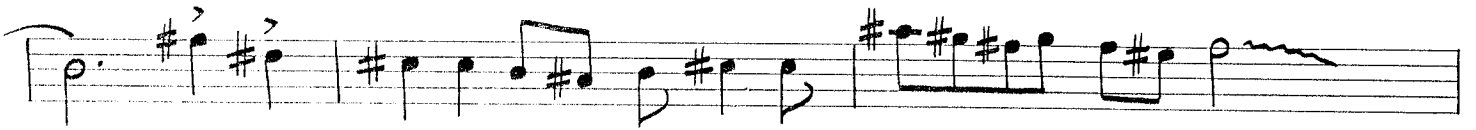
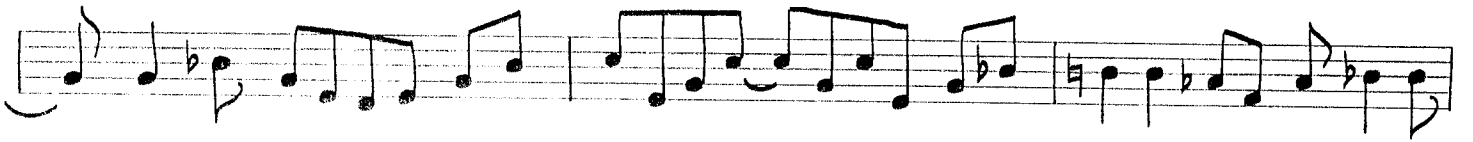
B

SHOUT OPEN



TPT. CADENZA

C



3X'S

D

PLAY 2X + 3X ONLY



D.S. AL FINE //

TRUMPET 4

# THE DON ELLIS BIG BAND SERIES

DON ELLIS

## CONCERTO FOR TRUMPET

5/4 *Slow-Chorale*

RIT. **FINE**

MED-LATIN VAMP I VAMP II **A** ST. MUTE 2X ONLY

1 2 VAMP TPT. SOLO

CUE VAMP **B** SHOUT OPEN

Musical staff with notes and rests.

TPT. CADENZA

C

Musical staff with notes and rests.

Musical staff with notes and rests.

Musical staff with notes and rests.

Musical staff with notes and rests.

3X'S  
D PLAY 2X+3X ONLY

Musical staff with notes and rests.

Musical staff with notes and rests.

Musical staff with notes and rests.

(LEAD)

Musical staff with notes and rests.

D.S. AL FINE

Musical staff with notes and rests.

TROMBONE 1

# THE DON ELLIS BIG BAND SERIES

DON ELLIS

## CONCERTO FOR TRUMPET

*f*  
SLOW-CHORALE

*f*  
FINE

MED.-LATIN  
VAMPI

VAMPII

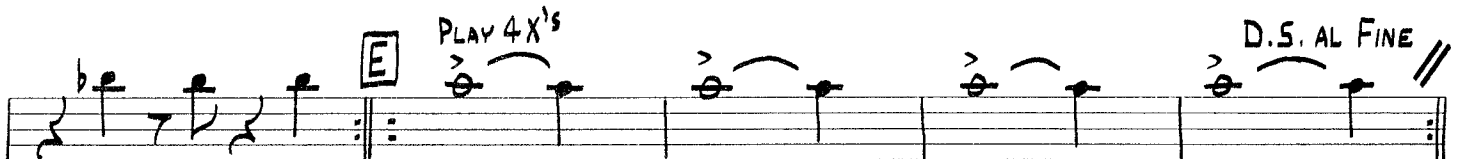
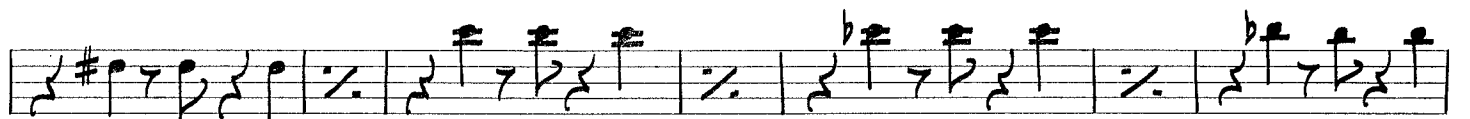
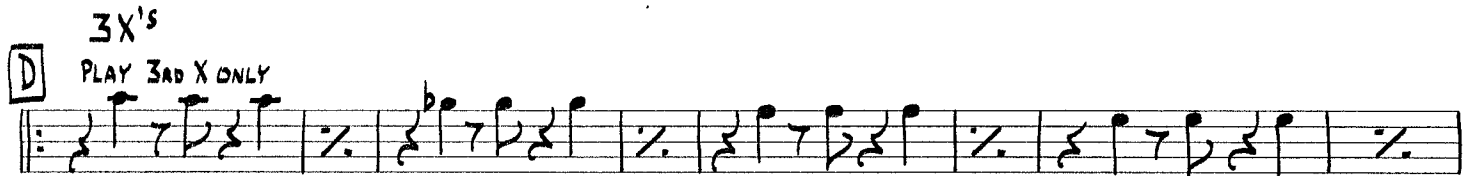
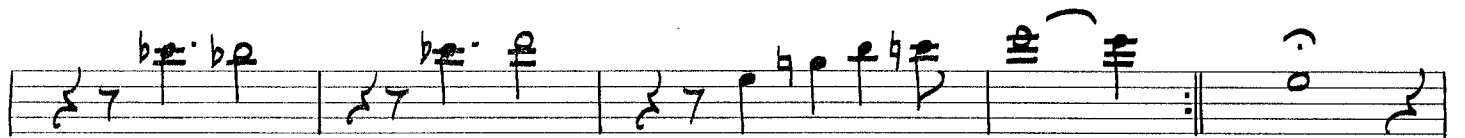
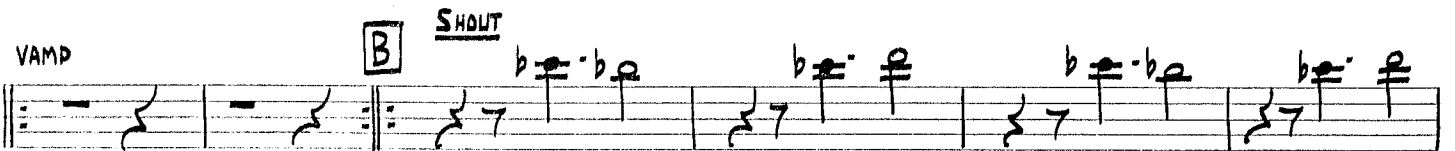
**A** 2X ONLY ST. MUTE

VAMP  
TPT. SOLO

CUE

OPEN

16





TROMBONE 2 THE DON ELLIS BIG BAND SERIES DON ELLIS

CONCERTO FOR TRUMPET

SLOW-CHORALE

Rit. FINE

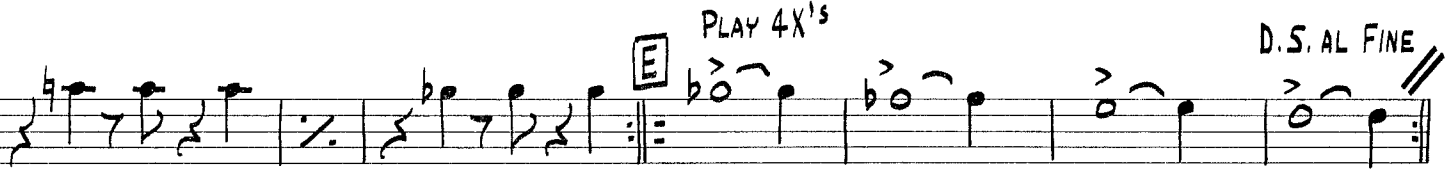
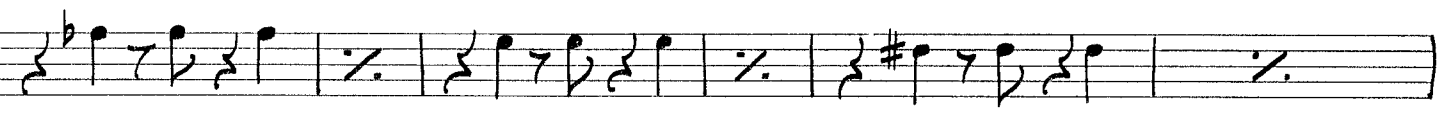
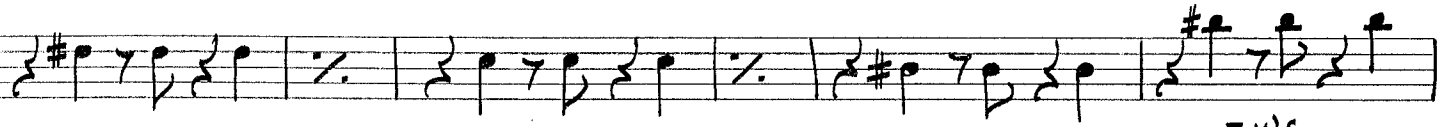
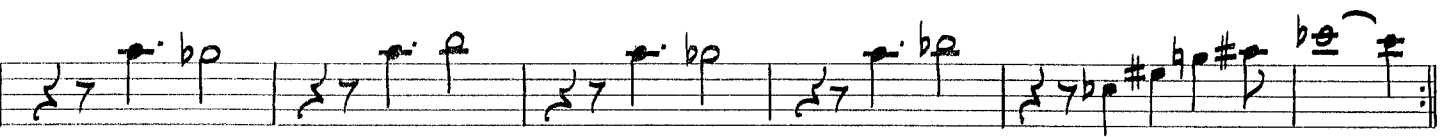
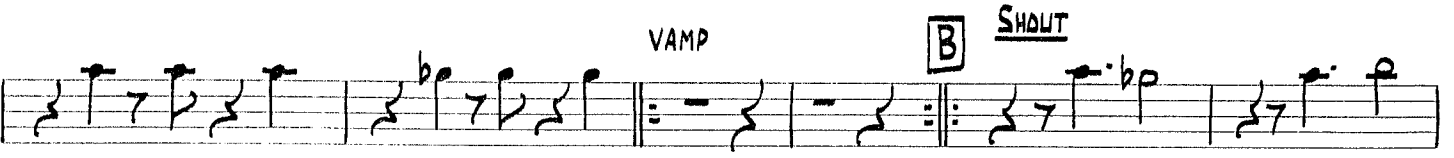
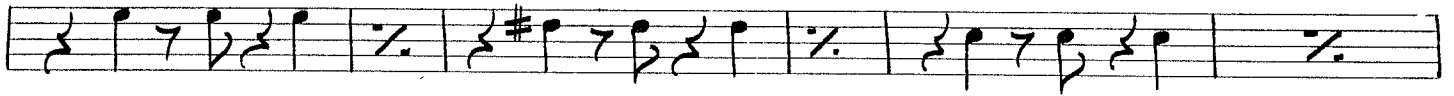
MED.-LATIN

VAMP I VAMP II

A 2X ONLY ST. MUTE

VAMP TPT. SOLO CUE

16 OPEN



TROMBONE 3 (BASS)

# THE DON ELLIS BIG BAND SERIES

DON ELLIS

## CONCERTO FOR TRUMPET

*♩* SLOW - CHORALE

RIT. FINE

MED. - LATIN  
VAMP I

VAMP II

A

2 X ONLY

ST. MUTE

(OPTIONAL)

VAMP  
TPT. SOLO

~2~

CUE

OPEN

16

VAMP

**B** SHOUT

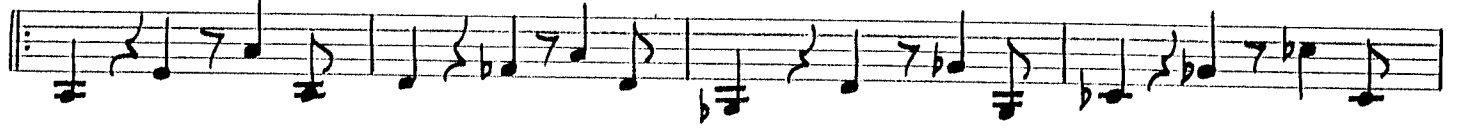
TPT. CADENZA

V.S.

3X's

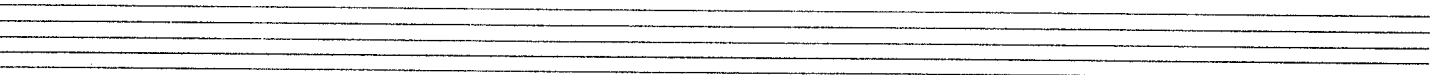
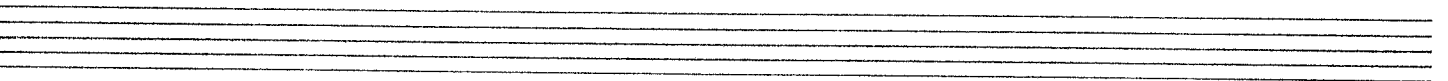
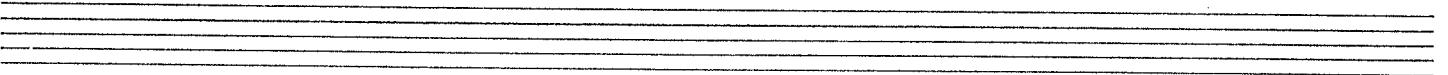
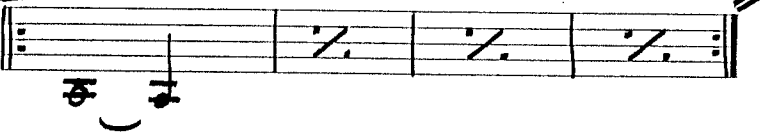
~3~

**D** PLAY 3RD X ONLY



**E** PLAY 4X's

D.S. AL FINE



TUBA

# THE DON ELLIS BIG BAND SERIES

DON ELLIS

## CONCERTO FOR TRUMPET

OPT. BVA BASSO  
 MED.-LATIN VAMP I  
 VAMP II  
 FINE  
 ff  
 OPT. 8VA  
**A**  
 16  
 VAMP (TPT. SOLD)  
 CUE  
 2  
 16  
 VAMP  
**B** SHOUT  
 2ND X-OPT. BVA BASSO  
 TPT. CADENZA  
**C**

SLOW-CHORALE  
 15  
 RIT.

A musical staff containing a sequence of notes and rests. The notes are mostly eighth and quarter notes, with some beamed eighth notes. There are several rests of varying lengths.

**D** PLAY 3X'S

A musical staff with a few notes followed by a double bar line. The number '16' is written above the staff.

16

**E** PLAY 4X'S

A musical staff with notes and slurs. The notes are mostly quarter notes, some with slurs underneath them. The staff ends with a double bar line and a repeat sign.

D.S. AL FINE

A series of ten empty musical staves, each consisting of five lines, arranged vertically.

GUITAR  
(SPANISH STYLE)

# THE DON ELLIS BIG BAND SERIES

DON ELLIS

## CONCERTO FOR TRUMPET

5/4

SLOW-CHORALE  
8

(SUSTAIN)

MED.-LATIN  
Cm<sup>7</sup> VAMP I Fm<sup>7</sup> VAMP II

ff FINE

**A** CONTINUE PATTERN

Cm<sup>7</sup> Fm<sup>7</sup> B<sup>b7</sup> E<sup>b</sup> MAJ.<sup>7</sup> Am<sup>7</sup> D<sup>7</sup> G MAJ.<sup>7</sup>

C MAJ.<sup>7</sup> F<sup>#m7</sup> B<sup>7</sup> E MAJ.<sup>7</sup> A MAJ.<sup>7</sup> E<sup>b</sup>m<sup>7</sup> A<sup>b7</sup>

VAMP TPT. SOLO CUE

D<sup>b7</sup> D<sup>b7</sup> :||: Cm<sup>7</sup> Fm<sup>7</sup> :||: Cm<sup>7</sup> Fm<sup>7</sup>

B<sup>7</sup> E<sup>b</sup> MAJ.<sup>7</sup> Am<sup>7</sup> D<sup>7</sup> G MAJ.<sup>7</sup> C MAJ.<sup>7</sup> F<sup>#m7</sup>

B<sup>7</sup> E MAJ.<sup>7</sup> A MAJ.<sup>7</sup> E<sup>b</sup>m<sup>7</sup> A<sup>b7</sup> D<sup>b7</sup> D<sup>b7</sup> :||:

VAMP

**B** CUE SHOUT (FILL UP - OR OPT. - WAIT ABOVE BAND)

Cm<sup>7</sup> Fm<sup>7</sup> :||: [Notes and rests]



~2~

TPT. CADENZA  
(SUSTAIN)

**C** 1STX

**D** 2ND, 3RD+4THX  
PLAY 4X'S

Musical staff with notes and chords: C m7, F m7, Bb7

Musical staff with chords: Eb, Am7, D7, G, C, F#m7, B7, E

**E** PLAY 4X'S

Musical staff with chords and notes: A, Ebm7, Ab7, Db, Db, E

Musical staff with notes and chords: Bb, Eb, Eb, Eb

D.S. AL FINE

Five empty musical staves

PIANO CONCERTO FOR TRUMPET THE DON ELLIS BIG BAND SERIES DON ELLIS

♩ SLOW-CHORALE Rit.

MED.-LATIN

VAMP I

VAMP II

A

CONTINUE PATTERN

Am <sup>7</sup>	D <sup>7</sup>	G MAJ. <sup>7</sup>	C MAJ. <sup>7</sup>	F#m <sup>7</sup>	B <sup>7</sup>
-----------------	----------------	---------------------	---------------------	------------------	----------------

E MAJ. <sup>7</sup>	A MAJ. <sup>7</sup>	Ebm <sup>7</sup>	Ab <sup>7</sup>	D <sup>b</sup>	D <sup>b</sup> :
---------------------	---------------------	------------------	-----------------	----------------	------------------

VAMP (TRPT. SOLO)

CUE

Cm <sup>7</sup>	Fm <sup>6</sup>	:	Cm <sup>7</sup>	Fm <sup>6</sup>	Bb <sup>7</sup>	Ebmaj. <sup>7</sup>
-----------------	-----------------	---	-----------------	-----------------	-----------------	---------------------

Am <sup>7</sup>	D <sup>7</sup>	G MAJ. <sup>7</sup>	C MAJ. <sup>7</sup>	F#m <sup>7</sup>	B <sup>7</sup>
-----------------	----------------	---------------------	---------------------	------------------	----------------

E<sup>MAJ.7</sup> | A<sup>MAJ.7</sup> | E<sup>b</sup>m<sup>7</sup> | A<sup>b</sup>7 | D<sup>b</sup> | D<sup>b</sup> :

VAMP

[: Cm<sup>7</sup> | Fm<sup>b</sup> :| B 16 )

TPT. CADENZA

C - D <sup>1ST X</sup> <sup>2,3+4 X</sup> PLAY 4X'S CONTINUE PATTERN

E<sup>b</sup> | A<sup>m</sup>7 | D<sup>7</sup> | G

C | F<sup>#</sup>m<sup>7</sup> | B<sup>7</sup> | E

A | E<sup>b</sup>m<sup>7</sup> | A<sup>b</sup>7 | D<sup>b</sup> | D<sup>b</sup> :

E PLAY 4X'S

D.S. AL FINE

Empty musical staves at the bottom of the page.

DRUMS 1

TIMBALES - (LOW BELL)

CONGA AD LIB

# THE DON ELLIS BIG BAND SERIES

DON ELLIS

## CONCERTO FOR TRUMPET

SLOW-CHORALE 16 RIT.

MED.-LATIN RAGTIME (TIMBALES PLAY ST. QUARTERS)  
 VAMPI I VAMPII 2 [A] DRUM 1 - TIMBALES CONTINUE (CLAVE PATTERN)

4 8

12 16 VAMP (TPT. SOLO)

LUE 16 VAMP [B] DRUM 1 - TIMB. UNISON

3

3

3 7

3 3

Musical staff with notes and rests. Includes a fermata and a triplet of eighth notes.

Musical staff with notes and rests. Includes a fermata and a triplet of eighth notes. Above the staff: TRPT. CADENZA. To the right: TIMB.-ST. QUARTERS.

Musical staff with notes and rests. Includes a fermata and a triplet of eighth notes. Above the staff: CYM. SWELL. Below the staff: PLAY 3X'S. To the right: TIMB.-ST. QUARTERS. Below the staff: 15 CONTINUE PATTERN.

Drum notation staff with rhythmic patterns. Includes a fermata and a triplet of eighth notes. Above the staff: DRUM 1 - AD LIB FILLS + TIMB. ON REPEAT (AD LIB.). Below the staff: 1ST X - mp, 2ND X - mf, 3RD X - f. To the right: 4.

Musical staff with notes and rests. Includes a fermata and a triplet of eighth notes. Above the staff: SLOW-CHORALE. Below the staff: 8, 7, SUS Cym., PP, CRESC.

Musical staff with notes and rests. Includes a fermata and a triplet of eighth notes. Above the staff: RIT. Below the staff: #.

Four empty musical staves.

BASS

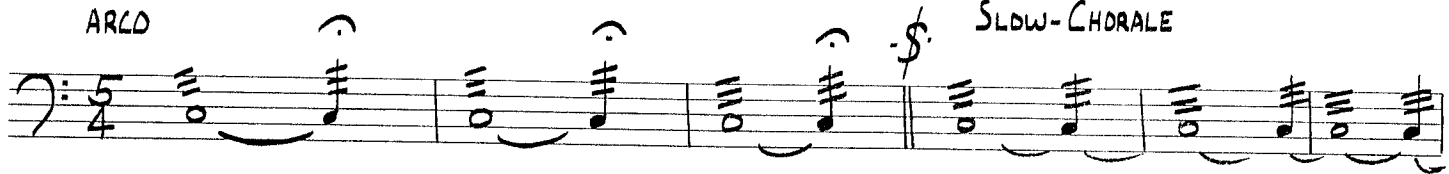
# THE DON ELLIS BIG BAND SERIES

DON ELLIS

## CONCERTO FOR TRUMPET

ARCO

SLOW-CHORALE



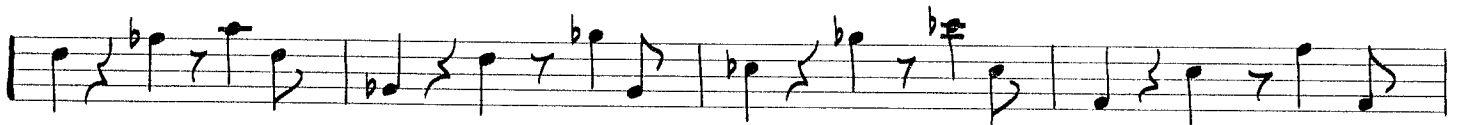
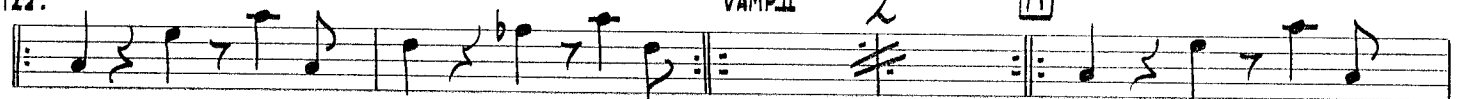
MED.-LATIN  
VAMP I

Pizz.

VAMP II

2

A



CUE



D.S. AL FINE

